



New

LUMENIA INDUSTRIAL

Hi-tech LED luminaires are the perfect combination of high illumination, minimum maintenance and extreme reliability, enabling greater labour and power efficiency.




110 lm/W
System efficacy


Long lifetime of more than 60,000 hours

IP 65
Protection class

IK 08
Mechanical strength

220-240V
Supply voltage


Energy saving product


Low maintenance


Spotless


Made in EU

Q LUM

Bright in all conditions

APPLICATION AREAS



Garages



Production facilities and workshops



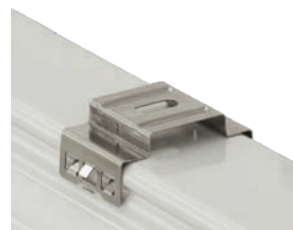
Corridors



BENEFITS

- Easy replacement for old fixtures
- Better quality comparing to traditional fixtures
- Quick installation without removing the cover
- Integrated LED technology
- Zhaga modular construction

WAYS OF INSTALLING



Wall or ceiling



With hook



QUICK ACCESS TO CONNECTORS

The connecting tray enables the electrical connection without disassembling the luminaire, thus accelerating the installation.

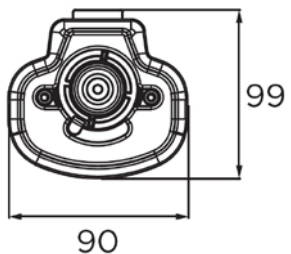
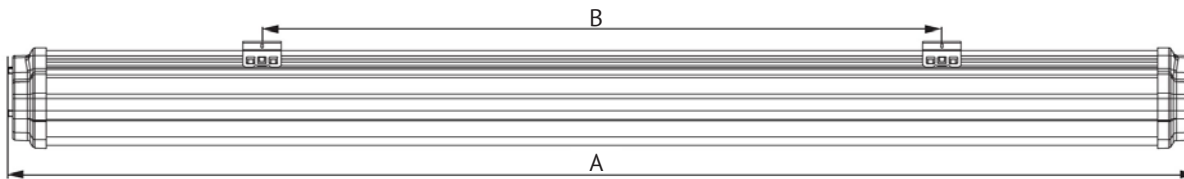



TECHNICAL SPECIFICATION

	Q LUM
System efficacy	Up to 110 lm/W
Supply voltage	220-240 VAC
Power	50 W, 60 W
Luminous flux*	5,600 lm, 6,500 lm
Lifetime L70B50	60,000 h
CCT	4,000 K
CRI	≥ 80
Ingress protection	IP 65
Mechanical strength	IK 08
Operating temperature	-10 °C to +35 °C
Remote control options	DALI
Connection	Build in connector (optional through connection)
Warranty	3 years

* +/- 10%, depends on CCT and CRI.

DIMENSIONS



SIZES	Q LUM 1	Q LUM 2
A	1208	1488
B	575	575
 KG	3,08	3,25

*All dimensions are in mm.

